

BETEM

耐用之选 · 持久真空 DURABLE CHOICE · CONTINUOUS VACUUM

专业技术团队可为不同需求客户定制中央真空系统
A professional technical team can customize central vacuum systems for customers with different needs



BETEM

倍特机械设备（东莞）有限公司
BETEM Mechanical Equipment (Dongguan) Co., Ltd

地址：广东省东莞市寮步镇石大路寮步段7号1栋

Add: Building 1, No. 7, Liaobu Section, Shida Road, Liaobu Town, Dongguan City, Guangdong Province

电话 / Tel: 0086-769-82223051

手机 / Mobile: 0086-180-2895-8875

传真 / Fax: 0086-769-82223351

E-mail: info@betempump.com

Web: www.betempump.com

海报广告·画册设计印刷·礼品包装 186 6405 0335

倍特机械设备（东莞）有限公司
BETEM Mechanical Equipment (Dongguan) Co., Ltd



最适合的才是最好的 ——源自德国技术！
The most suitable is the best ——Originating from German technology!

COMPANY PROFILE

公司简介

倍特机械设备（东莞）有限公司是一家以真空泵生产、销售及维修真空泵10余年的高科技企业。公司拥有多名从业20年以上资深工程师和强大的售后服务团队，凭借专业的真空技术为客户提供最适合的真空泵产品。

倍特机械设备在东莞设有标准的生产及维修工厂，并在江西和湖南等地设有办事处，为客户24小时提供技术支持及售后服务。

本公司专业生产销售油式旋片真空泵、无油旋片真空泵、爪式干式真空泵、罗茨真空泵、螺杆干式真空泵、活塞式真空泵、涡旋真空泵等。专业技术团队可为不同需求客户定制中央真空系统（厂务真空系统），设计、安装、调试一条龙服务。目前产品广泛用于电子含浸、半导体SIP封装、真空脱气、真空干燥、风电、生物制药、食品包装、印刷业、汽车制造、自动化工程等行业。

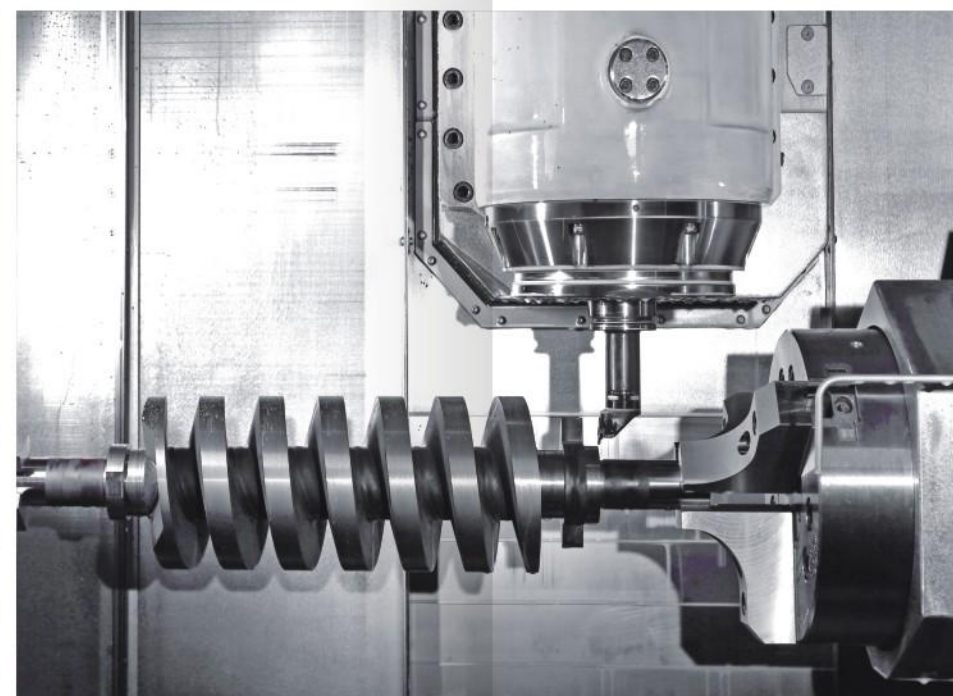
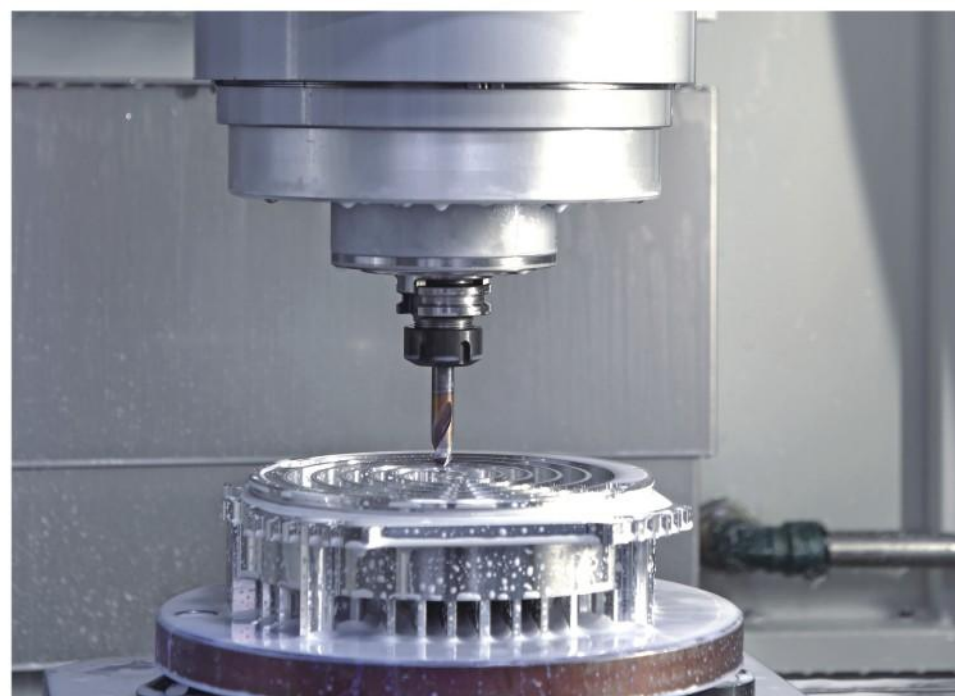
BETEM Mechanical Equipment (Dongguan) Co., Ltd is a high-tech enterprise that has been producing, selling, and maintaining vacuum pumps for over 10 years. The company has multiple senior engineers with over 20 years of experience and a strong after-sales service team, relying on professional vacuum technology to provide customers with the most suitable vacuum pump products.

BETEM Mechanical Equipment has a standard production and maintenance factory in Dongguan, and offices in Jiangxi and Hunan, providing 24-hour technical support and after-sales service to customers.

Our company specializes in the production and sales of oil type rotary vane vacuum pumps, oil-free rotary vane vacuum pumps, claw type dry vacuum pumps, Roots vacuum pumps, screw dry vacuum pumps, piston type vacuum pumps, vortex vacuum pumps, etc. A professional technical team can customize central vacuum systems (factory vacuum systems) for customers with different needs, providing one-stop services for design, installation, and debugging. At present, the products are widely used in industries such as electronic impregnation, semiconductor SIP packaging, vacuum degassing, vacuum drying, wind power, biopharmaceuticals, food packaging, printing, automotive manufacturing, automation engineering, etc.

PRODUCTION WORKSHOP

生产车间



QUALIFICATION PATENTS 资质专利



耐用之选 · 持久真空
Durable choice · continuous vacuum

OUR STRENGTHS 我们的优势



可按要求定制 Customizable according to requirements

标准电机直联驱动，可定制特殊要求电机，结构紧凑轻巧，尤其合适设备配套。
Standard motor direct drive, customizable for special motor requirements, compact and lightweight structure, especially suitable for equipment matching.



安装方便简单 Easy and simple installation

安装维护简易方便，运行费低廉，吸气口采用标准螺纹，连接方便。
Installation and maintenance are simple and convenient, with low operating costs. The suction port adopts standard threads, making it easy to connect.



可长期连续运行 Can operate continuously for a long time

运行平稳宁静，无需特殊固定或减震装置，可靠的油封圈结构，适合长期连续运行。
The operation is smooth and peaceful, without the need for special fixing or shock absorption devices. The reliable oil ring structure is suitable for long-term continuous operation.



专业的技术团队 A professional technical team

倍特在东莞设有专业维修工厂，专业的技术人员为客户24小时提供销售产品的技术支持及售后服务。拥有各种真空泵类型的维修保养技术、各类治具和必要的备品，能应客户要求，对客户工厂设置的真空机器、设备提供定期维修保养服务。

Betem has a professional maintenance factory in Dongguan, and professional technicians provide 24-hour technical support and after-sales service for customers to sell products. We have maintenance techniques for various types of vacuum pumps, various fixtures, and necessary spare parts, and can provide regular maintenance services for vacuum machines and equipment set up in customer factories according to customer requirements.



完善的服务体系 A comprehensive service system

完善的售后服务体系，拥有经过专业培训的售后客服，定期回访客户设备使用情况。倍特拥有多名从业多年的工程师和强大的售后团队，凭专业的真空技术为客户提供良好的服务与真空技术咨询。

A comprehensive after-sales service system, with professionally trained after-sales customer service, and regular follow-up visits to customer equipment usage. Betem has multiple experienced engineers and a strong after-sales team, providing customers with excellent service and vacuum technology consulting with professional vacuum technology.



SINGLE STAGE OIL SEALED ROTARY VANE VACUUM PUMP

Features:

- High ultimate vacuum degree,>0.1 millibar
- High pumping speed
- Low working noise, can be less than 67 decibels
- Strong steam extraction ability
- Environmentally friendly
- Compact structure.

Applications:

- Packaging and pasting
- Lifting, conveying, suction, loading and unloading
- Drying, degassing, and impregnation
- Laboratory equipment, medical equipment, recovery of Freon, vacuum heat treatment



BTV油润滑单级旋片泵
BTV OIL LUBRICATED SINGLE-STAGE ROTARY VANE PUMP



BTV 40

BTV63-100

BTV160-300

性能 / PERFORMANCE

1. 极限真空度高, ≥ 0.1 毫巴;

2. 抽速高

3. 工作噪音低, 可小于67分贝

4. 水蒸气抽除能力强

5. 环保, 泵内装有油雾消除器, 能除去排出气体中的99.999%的油

6. 结构紧凑, 设计科学合理, 轻便, 易于安装在工业系统中。
1. High ultimate vacuum degree, ≥ 0.1 millibar;

2. High pumping speed

3. Low working noise, can be less than 67 decibels

4. Strong steam extraction ability

5. Environmentally friendly, the pump is equipped with an oil mist eliminator that can remove 99.999% of the oil in the discharged gas

6. Compact structure, scientifically reasonable design, lightweight, and easy to install in industrial systems.

应用 / APPLICATION

- 包装、粘贴:** 各种食品、金属件及电子元件的真空或惰性气体包装;

照片、广告纸的粘贴吊运、输送、吸持、装卸;

玻璃板的吊运; 木板、塑料板的吸持;

造纸和印刷工业中, 纸和纸板的装卸、输送;

粉状材料的输送干燥、除气、浸渍;

电子元器件和干燥、浸渍; 铸模、涂料、真空炉的除气

其他: 实验室装置、医疗装置、氟利昂的回收、真空热处理
- Packaging and pasting: vacuum or inert gas packaging for various foods, metal parts, and electronic components;

The pasting, lifting, conveying, suction, loading and unloading of photos and advertising paper;

Lifting of glass panels; The suction of wooden boards and plastic boards;

In the papermaking and printing industry, the loading, unloading, and transportation of paper and paperboard;

Drying, degassing, and impregnation of powdered materials during transportation;

Electronic components and drying, impregnation; Degassing of molds, coatings, and vacuum furnaces

Other: laboratory equipment, medical equipment, recovery of Freon, vacuum heat treatment

规格 / SPECIFICATIONS

型号 Model		BTV 20	BTV 40	BTV 63	BTV 100	BTV 160	BTV 200	BTV 250	BTV 300
抽气速率 Pumping speed	m ³ /hr	20	40	63	100	160	200	250	300
极限压力 Ultimate pressure	mbar	0.5	0.1	0.1	0.1	0.1	0.1	0.1	0.1
电机功率 Motor power	kW	0.75	1.5	2.2	3	4	4	5.5	7.5
注油量 Oil volume	L	0.5	1	2	2	5	5	7	7
进气口 Air intake		G 3/4	G 1 1/4"	G 1 1/4"	G 1 1/4"	G 2"	G 2"	G 2"	G 2"
排气口 Exhaust port		/	G 1 1/4"	G 1 1/4"	G 1 1/4"	G 2"	G 2"	G 2"	G 2"
噪音 dB Noise level dB	(A)	62	63	64	65	70	72	72	74
尺寸(LxWxH) Size (LxWxH)	mm	324x246x213	625x284x263	701x406x290		920x536x410		1011x581x410	
重量(约) Weight (approximately)	kg	20	42	55	73	140	140	190	190

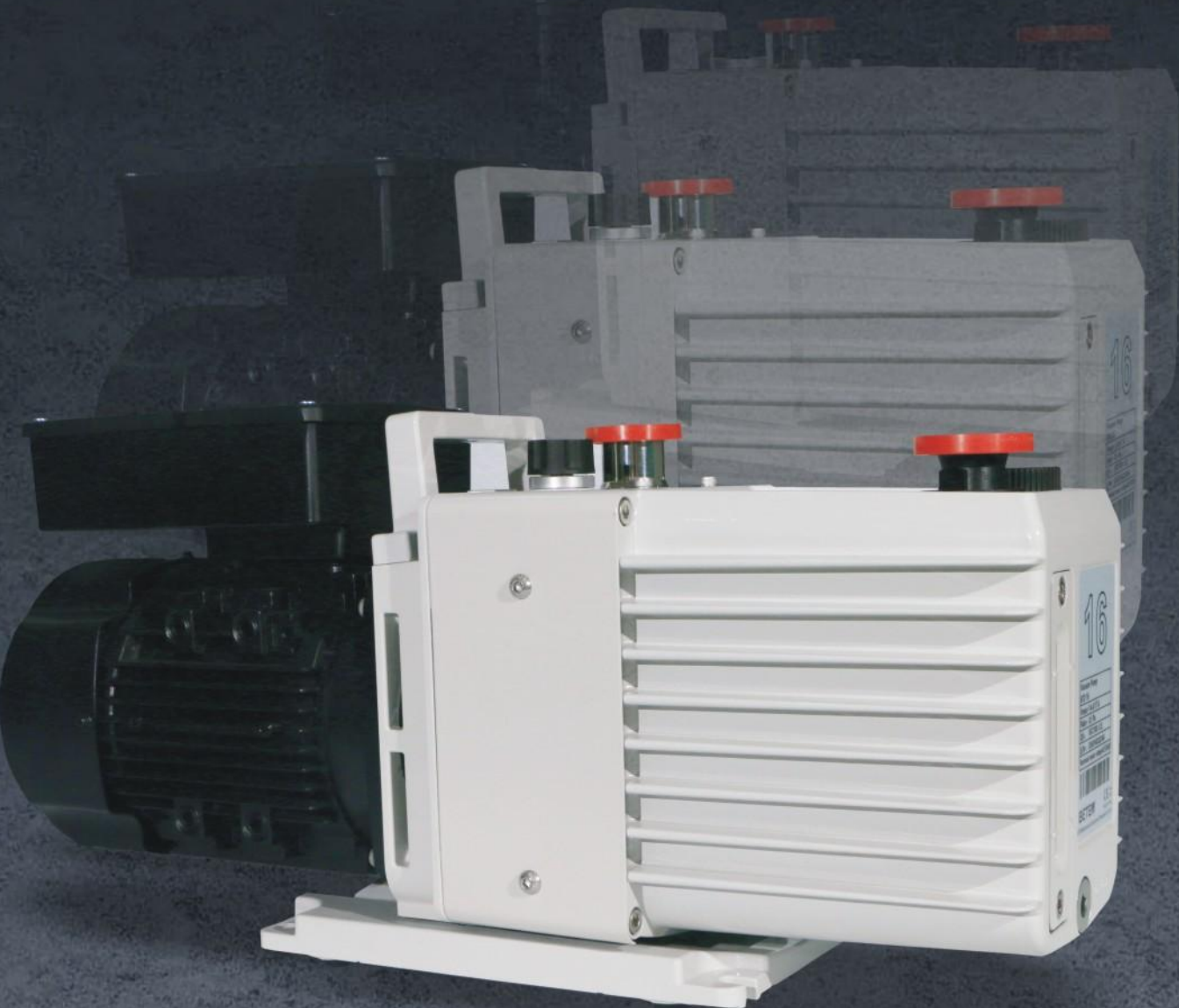
DUAL STAGE OIL SEALED ROTARY VANE VACUUM PUMP

Features:

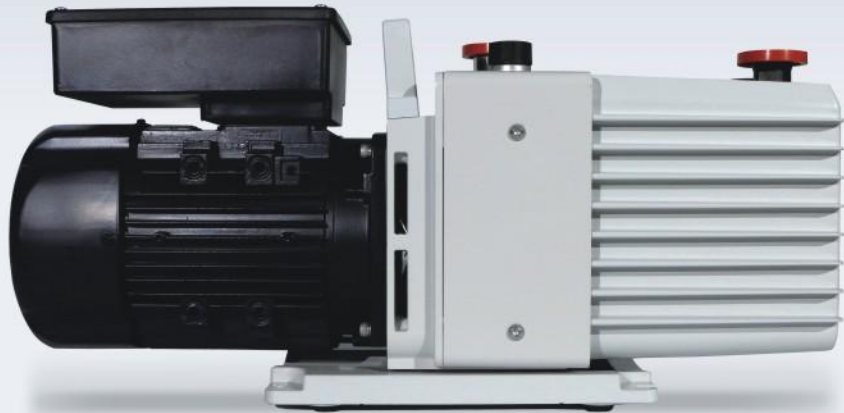
- Excellent performance
- Efficient
- Low operating costs
- Highest efficiency factor
- Adaptable
- Nearly maintenance-free

Applications:

- Analytical instruments
- Laboratory bench top vacuum
- Vacuum oven
- Leak detectors, helium
- Research and development
- Coating technology



BTD 油润滑双级旋片泵
BTD OIL LUBRICATION DUAL-STAGE ROTARY VANE PUMP



特点 / CHARACTERISTIC

- 采用无弹簧旋片，实现低噪音、低振动、高寿命
- 采用内置油逆止阀，实现泵无反油现象
- 采用内置油泵强制供油，实现泵在大气压以下长时间连续稳定运行
- 采用风冷、油冷、水冷等多种冷却方式相结合，确保良好的冷却效果，实现产品长期稳定运行，抽空性能稳定
- 合理的产品结构，易拆装，维护保养快速便捷
- Using springless rotating blades to achieve low noise, low vibration, and long lifespan
- Adopting built-in oil check valve to achieve no oil backflow phenomenon in the pump
- Adopting a built-in oil pump for forced oil supply, achieving long-term continuous and stable operation of the pump below atmospheric pressure
- By combining various cooling methods such as air cooling, oil cooling, and water cooling, we ensure a good cooling effect and achieve long-term stable operation of the product, as well as stable suction performance
- Reasonable product structure, easy disassembly and assembly, fast and convenient maintenance and upkeep

规格 / SPECIFICATIONS

型号 Model		BTD 10	BTD 16	BTD 30	BTD 40	BTD 60	BTD 90	BTD 175	BTD 275
抽气速率 m³/h Pumping speed	50 Hz	9.9	14.4	30	40	60	90	160	255
	60 Hz	12	17.4	36	48	72	108	196	306
极限压力 Pa Ultimate pressure	气镇关 Close gas control	5x10 ⁻¹	5x10 ⁻¹	5x10 ⁻¹	5x10 ⁻¹	5x10 ⁻¹	5x10 ⁻¹	5x10 ⁻¹	5x10 ⁻¹
	气镇开 Opening gas control	5	5	5	5	5	5	5	5
电机功率 kW Motor power		0.4	0.55	1.1	1.5	2.2	3.7	5.5	7.5
电压 V Voltage	三相 Three-phase	380, 400	380, 400	380, 400	380, 400	380, 400	380, 400	380, 400	380, 400
	单相 Single phase	220, 230	220, 230	-	-	-	-	-	-
注油量 Oil volume	L	0.55 ~ 1.1	0.65 ~ 1.2	1.2 ~ 2.8	1.2 ~ 2.8	2.5 ~ 4.2	2.5 ~ 4.2	20 ~ 25	23 ~ 28
进气口 Air intake		KF 25	KF 25	VG 40	VG 40	VG 50	VG 50	VG 50	VG 80
排气口 Exhaust port		KF 25	KF 25	M50x1.5	M50x1.5	M50x1.5	M50x1.5	M50x1.5	VG 50
冷却水 Cooling water	L/h	-	-	-	-	-	-	80	120
重量 Weight	kg	25	27	63	65	87	101	230	255

OIL-LESS ROTARY VANE VACUUM PUMP

Features:

- Low operation and maintenance costs
- Cool operation
- No cycling times
- Quiet operation — no silencer enclosures necessary
- Small footprint for space savings
- Straightforward construction for fast and easy service

Applications:

- CNC Routing – Woodworking Industry
- Composite / RTM / LRTM Manufacturing
- Electronics Industry
- General Mechanical Engineering
- Maple Sugar Extraction
- Medical Industry
- Printing and Paper Industry

耐用之选 · 持久真空
Durable choice · continuous vacuum

无油旋片真空泵
OIL FREE ROTARY VANE VACUUM PUMP



规格 / SPECIFICATIONS

型号 Model	抽气速度 Pumping speed (m³/h)		马达功率 Motor power (kW)		极限压力 Ultimate pressure (mbar)	噪音[dB(A)] Noise level		额定转速 (RPM-1)Speed		重量(kg) Weight
	50 Hz	60 Hz	50 Hz	60 Hz	50 Hz / 60 Hz	50 Hz	60 Hz	50 Hz	60 Hz	50Hz / 60Hz
BTS 10	10	12	0.37	0.44	150	60	62	1420	1700	15.0
BTS 16	16	19	0.55	0.66	150	61	64	1420	1700	22.0
BTS 25	25	30	0.75	0.9	150	62	67	1420	1700	28.0
BTS 40	40	48	1.25	1.5	150	67	72	1420	1700	39.0
BTS 60	60	72	2.2	2.6	150	71	73	1420	1700	70
BTS 80	80	96	2.2	2.6	150	72	75	1420	1700	70
BTS 100	100	120	3.0	3.6	150	75	77	1420	1700	105
BTS 140	140	168	5.5	6.9	150	76	79	1420	1700	115
BTS 250	250	300	7.5	9.6	200	81	81	1420	1700	312
BTS 360	351	402	11.0	13.2	250	80	82	1420	1700	358
BTF 10	10	12	0.37	0.44	1.0	62	62	1420	1700	15.0
BTF 16	16	19	0.55	0.66	1.0	64	64	1420	1700	23.5
BTF 25	25	30	1.10	1.30	1.0	65	65	1420	1700	36.5
BTF 40	40	48	1.82	2.20	1.0	67	67	1420	1700	46.0
BTF 60	60	72	3.0	3.6	1.5	72	72	1420	1700	69.0
BTF 80	80	96	4.0	4.8	1.5	74	74	1420	1700	77.0
BTF 100	100	120	5.5	6.6	1.5	76	76	1420	1700	127
BTF 140	140	168	7.5	9.0	1.5	82	82	1420	1700	146
BTFS 16	16	19	0.75	0.90	±0.6	67	67	1420	1700	36.0
BTFS 25	25	30	1.10	1.30	±0.6	67	67	1420	1700	36.0
BTFS 40	40	48	1.85	2.20	±0.6	68	68	1420	1700	45.0
BTFS 60	60	72	3.0	3.6	±0.6	75	75	1420	1700	74.0
BTFS 80	80	96	4.0	4.8	±0.6	75	75	1420	1700	79.0
BTFS 100	100	120	5.5	6.6	±0.6	77	77	1420	1700	129
BTFS 140	140	168	7.5	9.0	±0.6	78	78	1420	1700	140
BTFS 200	178	218	7.5	9.0	±0.5	75	75	1420	1700	280
BTFS 250	250	300	7.5	9.0	±0.5	81	81	1420	1700	312

ROCKING PISTON PUMP

Features:

- Flow range 30L/Min to 300L/Min
- Pressure range 100kPa to 800kPa
- Vacuum range -84kPa to -100kPa
- Dual rating for vacuum and pressure
- Standard and Special Designs

Applications:

- Printing — Sheet feed
- Stitching and Stapling
- Plastic — Welding
- Business Machines — Copier
- Vacuum frames
- Vending Machines
- Floor Cleaning Machines
- Medical devices



BTP活塞泵
BTP PISTON PUMP

特点/CHARACTERISTIC



- 采用德国生产工艺
- 元部件均源自德国进口
- 超低噪音、体型轻巧
- 排水蒸汽能力强
- 维护保养容易
- 能对应全压强领域的连续运转
- With German production process
- Components are derived from Germany import
- Ultra quiet, Light Volume
- Strong steam drainage ability
- Maintenance is easy
- Continuous operation in the field of energy corresponding to the pressure

产品应用/ APPLICATION

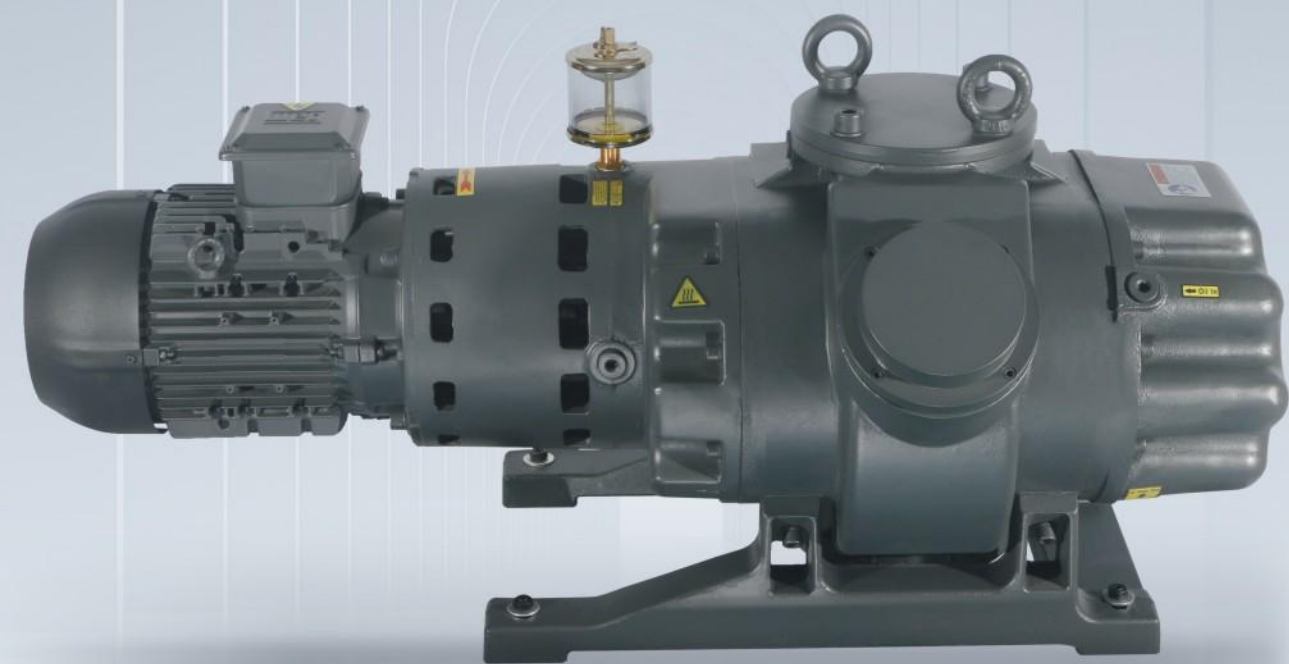
- 医疗健康(氧浓缩器、生化分析等)
- 食品、医药、化工(真空包装、气体置换等)
- 半导体制造(吸附、搬运、安装等)环境、节能(燃料电池等)
- 理化学(溶剂回收、真空干燥等)分析(电子显微镜、质量分析等)
- Medical health (oxygen concentrator, biochemical analysis, etc.)
- Food, medicine, chemical (vacuum packaging, gas replacement, etc.)
- Semiconductor manufacturing (adsorption, handling, installation, etc.) Environment, energy saving (fuel cell, etc.)
- Physical chemistry (solvent recovery, vacuum drying, etc.) Analysis (electron microscope, quality analysis, etc.)

真空泵规格/ VACUUM PUMP SPECIFICATIONS

型号 Model	功率 Power	电压 Voltage	频率 Frequency	额定抽速 Rated pumping speed	真空度 Vacuum degree	噪音 Noise	重量 Weight
BTP200V	100 W	220V/110V	50Hz/60Hz	30 L/min	-84kpa	≤48dB	2.0 kg
BTP300V	120 W	220V/110V	50Hz/60Hz	55 L/min	-86kpa	≤50dB	3.5 kg
BTP400V	200 W	220V/110V	50Hz/60Hz	90 L/min	-92kpa	≤50dB	5.5 kg
BTP550V	320 W	220V/110V	50Hz/60Hz	100 L/min	-92kpa	≤56dB	6.0 kg
BTP1400V	450 W	220V/110V	50Hz/60Hz	150 L/min	-92kpa	≤58dB	7.5 kg
BTP2000V	550 W	220V/110V	50Hz/60Hz	200 L/min	-92kpa	≤60dB	9.0 kg
BTP2400V	900 W	220V/110V	50Hz/60Hz	240 L/min	-92kpa	≤75dB	10.0 kg
BTP3000V	1100 W	220V/380V	50Hz/60Hz	300 L/min	-92kpa	≤76dB	19.0 kg
BTP4800V	650 W	220V/110V	50Hz/60Hz	460 L/min	-95kpa	≤68dB	15kg
BTP550H	320 W	220V/110V	50Hz/60Hz	80 L/min	-98kpa	≤56dB	6.0 kg
BTP1400H	450 W	220V/380V	50Hz/60Hz	120 L/min	-98kpa	≤58dB	8.5 kg
BTP2000H	550 W	220V/380V	50Hz/60Hz	175 L/min	-98kpa	≤60dB	9.0 kg
BTP2400H	900 W	220V/380V	50Hz/60Hz	210 L/min	-98kpa	≤75dB	10.0 kg
BTP3000H	1100 W	220V/380V	50Hz/60Hz	220 L/min	-98kpa	≤76dB	17.5 kg
BTP4800H	650 W	220V/110V	50Hz/60Hz	300 L/min	-100kpa	≤68dB	15kg

压力泵规格/ PRESSURE PUMP SPECIFICATIONS

型号 Model	功率 Power	电压 Voltage	频率 Frequency	额定抽速 Rated pumping speed	压力 Pressure	噪音 Noise	重量 Weight
BTP200C	120 W	220V/110V	50Hz/60Hz	30 L/min	100kPa	≤50dB	1.8 kg
BTP300C	150 W	220V/110V	50Hz/60Hz	55 L/min	200kPa	≤52dB	3.5 kg
BTP550C	320 W	220V/110V	50Hz/60Hz	100 L/min	300kPa	≤58dB	6.0 kg
BTP1400C	550 W	220V/380V	50Hz/60Hz	150 L/min	400kPa	≤60dB	7.5 kg
BTP2000C	750 W	220V/380V	50Hz/60Hz	200 L/min	600kPa	≤62dB	10.0 kg
BTP2400C	1100 W	220V/380V	50Hz/60Hz	220 L/min	800kPa	≤72dB	18.0 kg
BTP3000C	1500 W	220V/380V	50Hz/60Hz	240 L/min	800kPa	≤72dB	18.0 kg



ROOTS PUMP

Features:

- Power consumption is comparatively lesser
- Can be used in different industrial applications
- Disadvantages of Roots Blower:
- Once a conveying speed is fixed, huge expenditure needs to be incurred to modify the same
- Expensive noise dampening items are required
- A control device is mandatory to be installed

Applications:

- Semiconductor manufacturing: semiconductor wafer fabrication and lithography.
- Vacuum cooling: Vacuum cooling equipment, magnetic resonance imaging (MRI) equipment.
- Vacuum packaging: Roots vacuum pumps facilitate the vacuum packaging of food, pharmaceuticals, and cosmetics.
- Vacuum furnaces and heat treatment.
- Laboratory and scientific research.

BTR-A罗茨泵
BTR-A ROOTS PUMP



特点 / CHARACTERISTIC

- ※ 转子与泵腔、转子与转子之间无摩擦，无需润滑油，故泵腔内无油，避免了油对真空系统的污染。
- ※ 结构紧凑体积小，可以水平或垂直安装。
- ※ 具有良好的动平衡性，运转平稳，振动小，噪声低。
- ※ 可抽除可凝性气体。
- ※ 启动快，能在短时间内达到极限压力。
- ※ 功率小，运转维护费用低。
- ※ 罗茨泵带有旁通阀，起到自动过载保护作用，故运行安全可靠。
- ※ There is zero friction between rotors, also between rotor and pump chamber, so there is no need of lubricating oil. Consequently, our pump can avoid the oil pollution on vacuum system.
- ※ Compact structure, and easy to install horizontally or vertically.
- ※ Good dynamic balance, stable running, small vibration and low noise.
- ※ Can pump off the non- condensable gas.
- ※ Quick startup and can achieve the utmost pressure in a short time.
- ※ Small power and low operation maintenance costs.
- ※ The bypass valve on roots pump can enjoy the automatic overload protection effect, so that the operation will be safe and reliable.

产品应用 / APPLICATION

由于罗茨真空泵在较低入口压强下仍具有较高的抽速，特别适用于低入口压力下需要大抽速的真空系统中作为主泵或前级泵使用，并广泛应用于食品、化工、医药、轻纺等行业的生产过程中。例如：

真空冶炼、真空镀膜、真空热处理、真空浸渍、真空除尘、真空冷冻、真空蒸馏、真空浓缩、真空蒸发、真空干燥

Since roots vacuum pump can maintain large pumping speed in the lower intake pressure, so it can be used as the main pump or pore pump especially suitable for the vacuum system which has low inlet pressure but requires large pumping speed. It is widely used in the production process of food, chemical, pharmaceutical, textile and other industries. Such as:

Vacuum Smelting, Vacuum Coating, Vacuum heat treatment, Vacuum impregnation, Vacuum freezing, Vacuum distillation, Vacuum concentration, Vacuum evaporation, Vacuum drying

规格 / SPECIFICATIONS

型号Model	Unit	BTR 150A	BTR 300A	BTR 500A	BTR 1000A	BTR 2000A
抽气速率 50/60HZ Pumping speed	m³/h	153/185	280/338	505/506	1000/1200	2050/2460
极限压力 Ultimate pressure	Pa	0.05	0.05	0.05	0.05	0.05
电机功率 Motor power	kW	1.1	1.1	2.2	4	7.5
进口气口连接 Inlet and outlet connections	mm	70	70	70	100	150
零流最大压缩比 Zero current MAX compression ratio	max.	≥ 35	≥ 35	≥ 40	≥ 40	≥ 50
转速 50/60HZ Speed 50/60Hz	rpm		2950/3500	2950/3500	2950/3500	2950/3500
最大允许压差 MAX allowable pressure difference	Pa	8000	8000	8000	8000	5000
注油量 Oil volume	L	1.5	1.5	3	5	7
噪音 Noise level dB	dB(A)	63	63	63	68	75
冷却方式 Cooling method		自然风冷 Natural air cooling	自然风冷 Natural air cooling	自然风冷 Natural air cooling	自然风冷 Natural air cooling	自然风冷 Natural air cooling
尺寸(WxHxD) Size (WxHxD)	mm	740 x 325 x 285	740 x 325 x 285	845 x 395 x 350	1080 x 485 x 420	1280 x 642 x 530
重量 Weight	KG	90	100	155	233	465

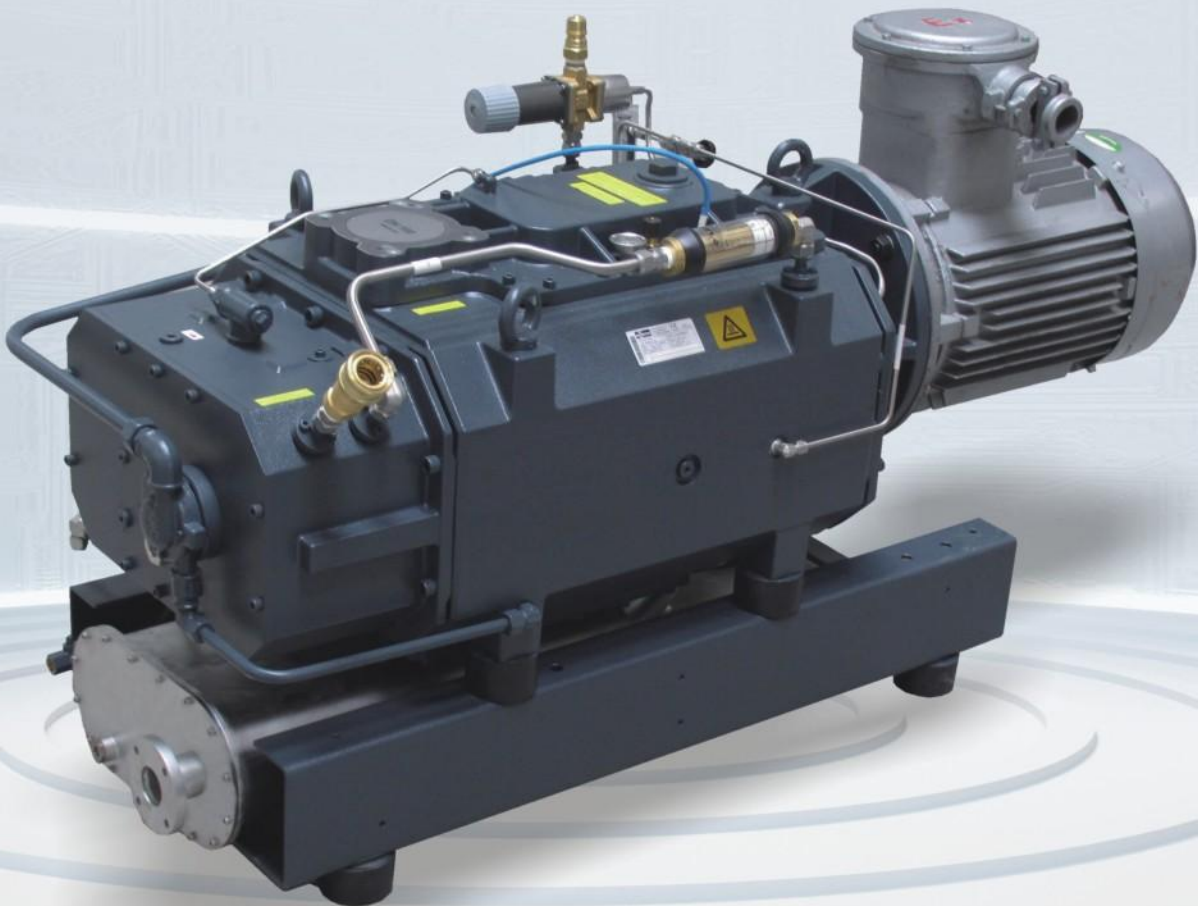
DRY SCREW VACUUM PUMP

Features:

- Optimum final pressure and wide range of application
- Absolutely dry and oil-free
- No contamination of the pumped medium
- High pumping speed in atmosphere reduces the pump-out time
- Water cooling with temperature monitoring
- Wear-free dynamic seal
- Easy Maintenance & Quiet Operation
- Wide Operating Range
- Reliable Performance

Applications:

- Bottling
- Packaging Industry
- R&D / Laboratories
- Solar Technology
- Surface Technology / Electronics
- Industrial applications including
Cleaning, Coating, Drying, Dust
Extraction Systems, Industrial
Furnaces, Vacuum Metallurgy



BSC无油螺杆泵
BSC OIL-FREE SCREW PUMP



BSC此系列螺杆真空泵是由一对变距等径平行的螺旋状转子与泵体组成的一个工作室，转子与泵体之间没有摩擦且保持一定的间隙，两个转子与泵体之间形成了密封腔，当转子旋转时把密封腔内的气体不断地挤带至排气口排出。因螺杆真空泵无需润滑油或水密封，泵腔内完全无油，因此螺杆泵是无油干式真空泵，它是往复泵、水环泵、水喷射真空泵、油封式滑阀真空泵、旋片真空泵及罗茨机组的更新换代产品。最新设计带有清扫口和两端氮气保护，可以用在抽除可凝性气体、带有少量粉尘及微小颗粒的气体，不易堵塞、清洗方便、使用可靠，该功能其他厂家不具备的。

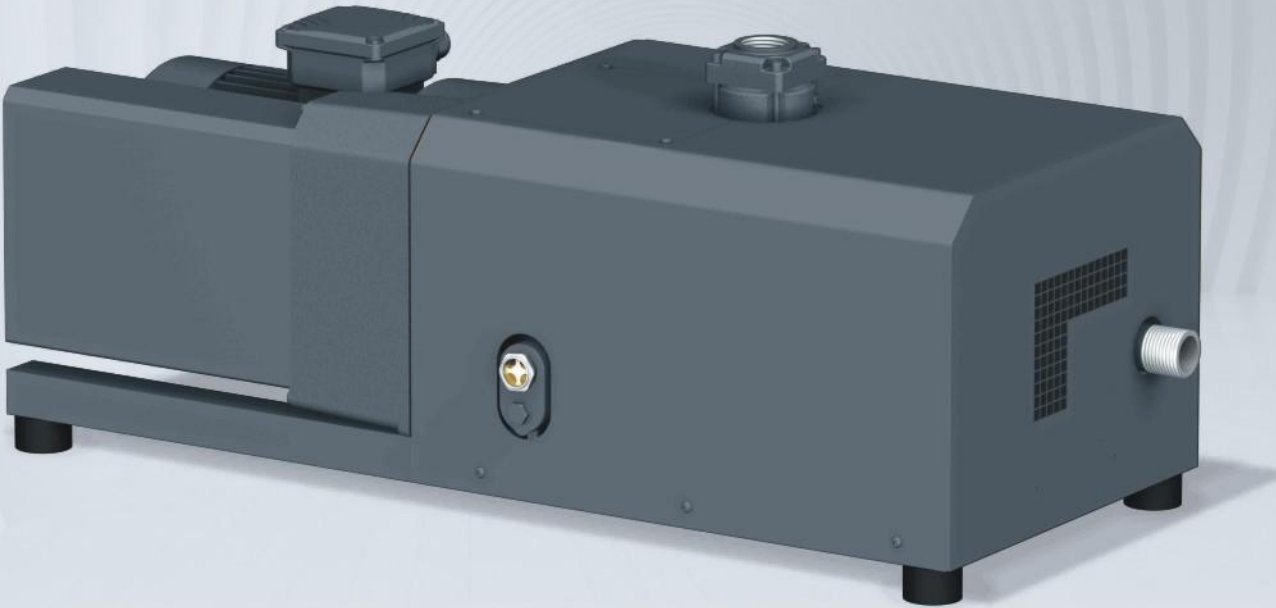
一般都以减压启动为主，特殊要求的可加装变频电机和变频器，进行有效真空和抽气速率的调整。设计上可作移动真空，不需地脚固定。可根据客户气体情况或需求个性化定制材质要求。

The BSC series screw vacuum pump is a working chamber composed of a pair of helical rotors with variable pitch and equal diameter parallel to the pump body. There is no friction between the rotors and the pump body, and a certain gap is maintained. A sealing chamber is formed between the two rotors and the pump body. When the rotors rotate, the gas in the sealing chamber is continuously squeezed to the exhaust port for discharge. Due to the fact that screw vacuum pumps do not require oil lubrication or water sealing, and the pump chamber is completely oil-free, screw pumps are oil-free dry vacuum pumps. They are updated products of reciprocating pumps, water ring pumps, water jet vacuum pumps, oil sealed slide valve vacuum pumps, rotary vane vacuum pumps, and Roots units. The latest design comes with a cleaning port and nitrogen protection at both ends, which can be used to remove condensable gases, gases with small amounts of dust and small particles. It is not easy to block, easy to clean, and reliable to use. This function is not available from other manufacturers.

Generally, vacuum starting is the main method. For special requirements, variable frequency motors and frequency converters can be installed to adjust the effective vacuum and pumping rate. It can be designed as a mobile vacuum without the need for foot fixation. Customized material requirements can be made based on customer gas conditions or needs.

规格 / SPECIFICATIONS

型号 Model	Unit	BSC140	BSC 280	BSC 450	BSC 650	BSC 800	BSC 1000	BSC 1500
抽气速度 Pumping speed	m³/h	140	280	450	650	800	1000	1500
极限压力 Ultimate pressure	Pa	3~30	3~30	3~30	3~30	3~30	3~30	3~30
电压 Voltage	V	220/380	220/380	220/380	220/380	220/380	220/380	220/380
额定功率 Rated power	kW	4	7.5	11	15	18.5	22	30
进气口 Air intake		G1"	DN80	DN80	DN80	DN100	DN100	DN125
排气口 Exhaust port		DN32	DN32	DN40	DN50	DN50	DN65	DN65
尺寸 (L×W×H) Size (L×W×H)	mm	925x502x535	1235x370x845	1560x680x1200	2050x750x1400	2150x775x1550	2200x790x1600	2300x850x1650
重量 Weight	kg	230	320	500	680	780	820	1000
电机转速 Motor speed	r/min	2900	2900	2900	2900	2900	2900	2900



■ DRY CLAW VACUUM PUMP

Features:

- ⦿ Excellent performance
- ⦿ Efficient
- ⦿ Low operating costs
- ⦿ No operating fluids, with no purchase, replacement or disposal costs
- ⦿ Low servicing costs, nearly maintenance-free
- ⦿ Highest efficiency factor
- ⦿ Adaptable
- ⦿ Industry standard motor

Applications:

- ⦿ Petrochemical Industry: crystallization, distillation, polymerization, vacuum evaporation, vacuum drying.
- ⦿ Pharmaceutical industry: negative pressure filtration, monomer recovery, and adsorption / desorption.
- ⦿ Food industry: claw vacuum pump sublimation, drying, and vacuum packaging.
- ⦿ Research institutes: negative pressure filtration, pilot plant, wind tunnel test.
- ⦿ Electronic photovoltaic: impregnation, vacuum coating.

BCT爪式真空泵
BCT CLAW TYPE VACUUM PUMP



BCT爪式真空泵是一种转子为爪形的旋转式容积真空泵，泵壳内具有两个共轭啮合的爪形转子，与罗茨真空泵类似，转子由一对同步高精度齿轮来带动旋转并固定相位，转子之间及转子与泵壳之间并不接触，留有微小的间隙。气体的进气口和排气口均设在泵壳的端面上，分别由两个转子端面周期性的定时开闭，具有阀的调解作用。

BCT claw type vacuum pump is a rotary volumetric vacuum pump with a claw shaped rotor. The pump casing has two claw shaped rotors that mesh together. Similar to Roots vacuum pump, the rotor is driven by a pair of synchronous high-precision gears to rotate and fix the phase. There is no contact between the rotors or between the rotor and the pump casing, leaving a small gap. The intake and exhaust ports of the gas are both located on the end face of the pump casing, and are periodically opened and closed by two rotor end faces, with the function of regulating valves.

特点 / CHARACTERISTIC

- ※ 一般都需采用星三角或减压起动为准。
- ※ 特殊要求的可加装变频电机和变频器，进行有效真空和抽气速率的调整。
- ※ 该系列可作移动真空及GMP环境使用，可根据客户需求个性化设计，选定耐腐蚀材质要求。
- ※ BCT系列真空泵适用于低、中真空领域，主要用于抽除空气和其它干燥气体，它是低、中真空的主要设备之一，它可单独使用或串联并联使用(串联可提高真空度，并联可提高抽气速率)也可以成为其它真空泵的前级泵。
- ※ 该系列真空泵具有运转性能可靠不用阀片、弹簧等，易损件少、振动小、噪音低、效率高的特点。且不用任何介质及冷却水就形成真空，无二次污染。
- ※ BCT系列真空泵是引进国外先进技术，关键零部件选用进口元件或进口材料制作而成，完全可以替代国外同类产品。
- ※ BCT系列尤其适用于高寒，温度较低区域使用，其无水，风冷克服了起动难及冻裂现象。
- ※ Generally, star delta or reduced pressure starting is used as the standard.
- ※ For special requirements, variable frequency motors and frequency converters can be installed to adjust the effective vacuum and pumping rate.
- ※ This series can be used in mobile vacuum and GMP environments, and can be customized according to customer needs by selecting corrosion-resistant materials.
- ※ The BCT series vacuum pump is suitable for low and medium vacuum fields, mainly used for extracting air and other dry gases. It is one of the main equipment for low and medium vacuum, and can be used alone or in series or parallel (series can improve vacuum degree, parallel can increase pumping rate). It can also be used as a precursor pump for other vacuum pumps.
- ※ This series of vacuum pumps has the characteristics of reliable operation performance, no need for valve plates, springs, etc., fewer vulnerable parts, low vibration, low noise, and high efficiency. And it forms a vacuum without any medium or cooling water, without secondary pollution.
- ※ The BCT series vacuum pump is made by introducing advanced foreign technology and selecting imported components or materials as key components, which can completely replace similar foreign products.
- ※ The BCT series is particularly suitable for use in high-altitude and low temperature areas. It is water-free and air-cooled, overcoming difficulties in starting and freezing cracks.

规格 / SPECIFICATIONS

型号 Model	Unit	BCT30	BCT50	BCT70	BCT100	BCT180
抽气速率 Pumping speed	L/S	30	50	70	100	180
极限压力 Ultimate pressure	mbar	60	60	190(风冷 Air cooling) 70(水冷 Water-cooling)	190(风冷 Air cooling) 70(水冷 Water-cooling)	70(水冷) Water-cooling
电机功率 Motor power	kW	3	4	5.5	7.5	11
重量 Weight	kg	185	195	245	265	380
转速 Speed	rpm	2980	2980	2980	2980	2980
尺寸(LxWxH) Size (LxWxH)	mm	980x412x408	980x412x408	1209x510x450	1209x510x450	1110x580x800
进气口 Air intake		G1 1/4"	G1 1/4"	G2"	G2"	G3"
排气口 Exhaust port		G1 1/4"	G1 1/4"	G1 1/2"	G1 1/2"	G2"



真空系统 VACUUM SYSTEM

- ◎ 可按客户要求设计、定制
- ◎ 外形美观、安全、降噪
- ◎ 智能控制，运行稳定，真空度可调
- ◎ Can be designed and customized according to customer requirements
- ◎ Beautiful appearance, safety, and noise reduction
- ◎ Intelligent control, stable operation, and adjustable vacuum degree

配件 ACCESSORY



Spiral Tube



Radiator



Inlet Valve Complete



Axial fan



滤芯 Filters